



Images from 2011/12

FRCC publishes a quarterly newsletter detailing many of the activities in our area. The images to the left are some of those featured in our newsletters and other publications during the year.

Additional images can be found on our web and our facebook sites.

Funding Acknowledgement

This project is supported by Fitzroy Basin Association Inc. through funding from the Australian Government's Caring for Our Country and Queensland Government.



Fitzroy River & Coastal Catchments
14 Wandal Road Rockhampton Q 4700
T: 07 4921 0573 F: 07 4921 0528
E: info@frcc.org.au www.frcc.org.au

for
**future
generations**



Fitzroy River and Coastal Catchments Inc.
Annual Report 2011/12



Fitzroy River and Coastal Catchments Inc

Fitzroy River and Coastal Catchments Inc (FRCC) was established on 7th January 2005 as a not for profit incorporated association. For over two years prior the catchment group operated as a sub-committee of the Fitzroy Basin Association and during this time received tremendous stakeholder support and input to develop a natural resource management plan.

The organisation has continued to grow and expand its membership base and now coordinates the delivery of a range of on-ground projects and capacity building activities across the Fitzroy River and the coastal catchments of the Capricorn Coast and Broadsound.

During 2011/12 FRCC employed twelve people in casual, temporary and fulltime capacities based on six full-time positions. The pictures adjacent are of some of FRCC's staff members during the year.

Member organisations of FRCC

Agforce Rockhampton Branch		Gladstone Regional Council		Conservations Volunteers		Raglan Creek Catchment Working Group	
Australian Braford Society Inc.		Great Barrier Reef Marine Park Authority		CQ Forest Association		Rockhampton Fruit & Vegetable Growers Association	
Australian Brahman Breeders Association Ltd.		Greening Australia Qld (Inc).		Department of Agriculture, Fisheries and Forestry		Rockhampton Regional Council	
Capricorn Branch, Wildlife Preservation Society of Qld		Isaac Regional Council		Department of Natural Resources and Mines		SeaSpray Project Management Pty Ltd	
Capricorn Caves		Jemena		Droughtmaster Stud Breeders Society		Stanwell Corporation Ltd	
Capricorn Coast Landcare Group Inc.		Livingstone Remnant Veg. Study Group		Emu Park Community Bushcare Group		The Caves Landcare Group	
Capricorn Conservation Council		Mariborough Landcare Association Inc.		Fitzroy Basin Association Inc.		The Leucaena Network	
Capricorn Pest Management Group		Morinish Landcare Group Inc		Fitzroy Basin Elders Committee		Wycarbah & District Landcare Group Inc	
Capricorn Tourism and Economic Development Ltd.		Qld Fire and Rescue Service		Fitzroy River Fish Stocking Association		Yeppoon Fruitgrowers & Local Producers Association	
Capricornia Beekeepers Club Inc.		Qld Parks & Wildlife Service		Fitzroy River Water		Yeppoon Organic & Biodynamic Growers Group	
Charbray Society of Australia		Qld Rural Adjustment Authority		Gladstone Pacific Nickel Ltd			

FRCC Management Committee activities

	Management Committee meetings (attended / held)	Management Committee workshops (attended / held)	NC project assessment panel (attended / held)	Interests of Management Committee members
Michelle Hanrahan (President)	6/6	1/1	6/6	Landcare & Industry
Peter Baggett (Secretary)	6/6	0/1	6/6	Grazing & Weeds
Leise Childs (Treasurer)	4/6	0/1	4/6	Conservation
Paul Birch ¹	2/3	0/1	1/6	Finance
Sarah Becker ³	2/3	0/1	2/6	Finance
Don Black	6/6	0/1	6/6	Grazing
Ian Dare	6/6	1/1	6/6	Local Government
Ian Groves	5/6	1/1	5/6	Horticulture
Evelyn Carte	6/6	1/1	6/6	Cultural Heritage
Rob McArthur	4/6	0/1	4/6	Grazing & Landcare
Jeff Mills ²	3/3	0/1	2/6	Grazing & Landcare
John Wall	5/6	1/1	5/6	Grazing & Landcare

Paul Birch ceased 9.12.11; Jeff Mills ceased 9.12.11; Sarah Becker commenced 9.12.11

President's Report (Michelle Hanrahan)

Fitzroy River and Coastal Catchments Inc. (FRCC) is a community based natural resource management group and is one of five sub-regional groups funded through the Fitzroy Basin Association (FBA) for the implementation and adoption of sustainable land use practices for the lower Fitzroy River and the coastal catchments of the Broadsound and Capricornia areas.

A particular feature of the 2011/12 financial year was again the considerable investment that FRCC has made into building capacity within the region to look after our land and water for future generations. This year continued and built upon the excellent work initiated in previous years with a highlight partnering with FBA for a display at Beef 2012 and a members function at Flow, the interactive catchment centre.

FRCC continued to engage Councilors and work closely with officers from the Rockhampton Regional Council (RRC) to plan and deliver training and awareness opportunities for landholders and the wider community.

The 2011/12 financial year began with increased staff stability to that experienced in the previous year, however later in the year some staff moved on and new and additional positions were filled.

One of these positions related to the State Government's Flood Recovery project managed by FRCC requiring an increase in staff to provide additional opportunities for FRCC to support landholders with access to financial incentives for the management of parkinsonia and prickly acacia in the flood zone.

During this year FRCC was successful in receiving approval for five new grants to fund a range of on-ground projects and community awareness events.

FRCC continued to develop links and partnerships with community groups, increased its membership and contributed to the development and strengthening of networks across our area to assist in delivering services to landholders and the wider community.

The wet season and minor flood event during the summer presented some challenges, but not to the extent experienced during the previous year. Workshops hosted across our area included activities focused on soil health, property planning, indigenous cultural heritage awareness as well as community and school information sessions.

Water quality continues to be an issue for many in our community particularly following the floods, with FRCC Management Committee strongly supporting the provision of more concise information that is regularly updated for the general public on the quality of our water and the overall health of the river.

The many challenges in our local area have continued to inspire the Management Committee to advocate strongly for increased resourcing, to seek new business opportunities and to consider alternative methods of delivering services to our clients.

President, Michelle Hanrahan with 2011 Management Committee



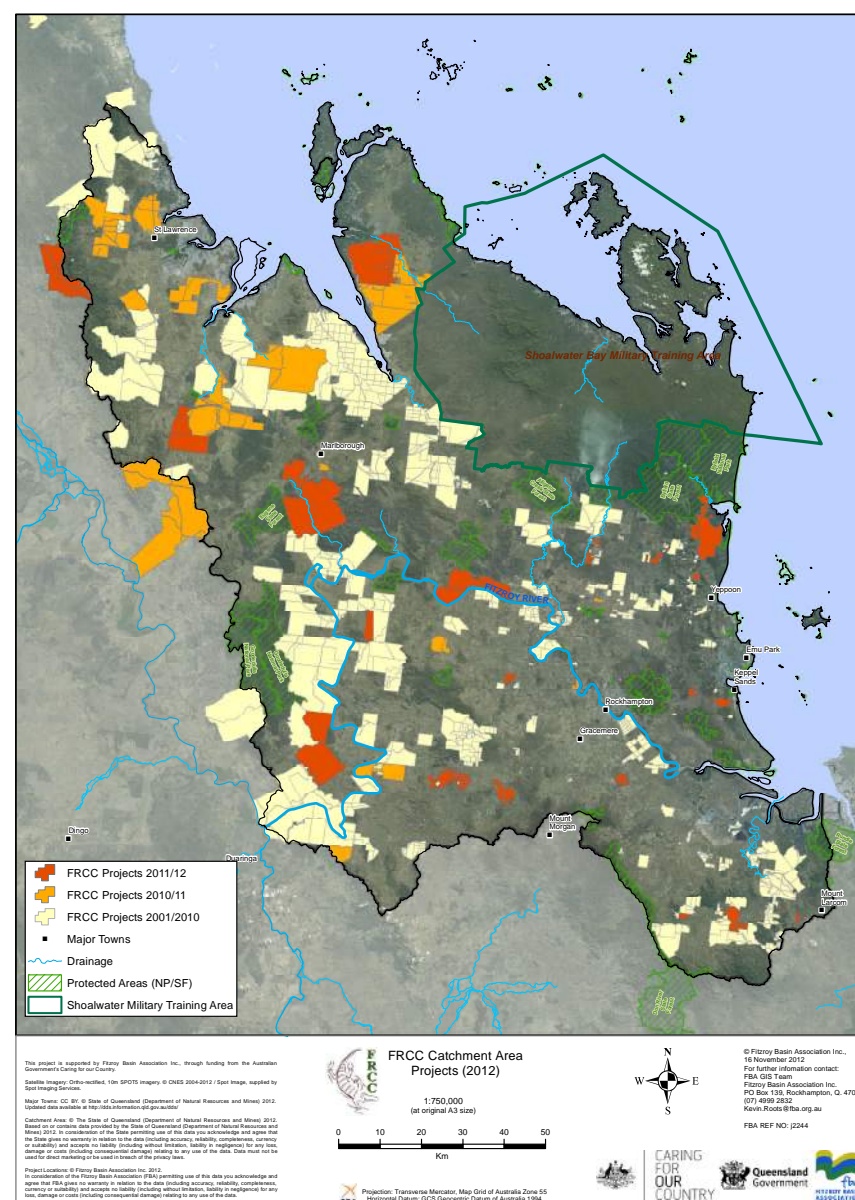
FRCC on-ground projects

The FRCC Management Committee approved 33 projects in the 2011/12 financial year with a total value of \$1.26million comprised of 65% land owner contribution and 35% FBA incentive funding.

The better weather conditions during this year gave landholders more opportunities to develop infrastructure projects linked to providing improved natural resource management outcomes. All projects have outcomes aimed at reducing erosion and sediment or pesticide runoff into streams and waterways and ultimately to the reef.

The delivery of the three flood recovery projects continued and in addition FRCC began to offer access to \$300,000 State Government incentive funding, provided through FBA, for the management of woody weeds in country affected by the 2010/11 floods with the establishment of six pilot projects along the Fitzroy and lower Mackenzie rivers.

The more favourable conditions contributed to grains cropping landholders in the FRCC area becoming engaged in the Grains Best Management Practice program which gave them the opportunity to access incentive funding for equipment upgrades in support of delivering reef rescue outcomes.



FRCC Catchment Area - Projects 2012

Executive Officer's Report

(Jeff Krause)

Partnerships and Opportunities

The organization has developed new partnerships and explored many opportunities during 2011/12.

I am extremely proud to be part of a team that includes our dedicated and enthusiastic staff who work with great passion to deliver our programs.

The team included a third year CQ University science student, Kristy Byers, employed on a casual basis to deliver technical and administrative services as well as to further highlight the value of tertiary science study to the local community. This role has also assisted in developing stronger links with CQU. Kristy secured a position as an Entomologist with the State Government and we have been very fortunate to have another student, Stephen Donaldson, join our team.

Rhys Kellow was a key person, developing many new opportunities for FRCC, achieving success by securing five grants during 2011/12 to support the delivery of our services before moving to a more lucrative position in the gas industry.

The expertise of our field officers, John Rodgers and Lisa Sutton, and Rob Doyle from Growcom, delivered increased numbers of projects this year. Lisa and John also facilitated the expansion of incentive programs to grains producers in the FRCC area. The enthusiasm and networking abilities of Shelly McArdle further developed our partnership opportunities with community, media and promotion of FRCC activities.

Media and promotion opportunities have increased significantly this year with 94 individual television or print media items reporting FRCC events and associated activities.

Once again the annual strategic planning retreat involving the management committee and staff proved a valuable activity with issues being identified and priorities set for the future.

Strategic direction for FRCC:

Our Mission

Leading by example, utilising knowledge and innovation, facilitate and nurture the sustainable and productive use of the regions natural resources, through a community partnership approach.

Vision - Our preferred future

To be a premier NRM organisation that provides engaged and proactive leadership in sustainable natural resource use and management which leads to the majority of stakeholders engaging in best environmental practice.

Priorities include:

- Continue to establish and strengthen partnerships and alliances
- Continue to develop and implement a marketing and communication strategy
- Promote Best Management Practice initiatives (Small Landholders, training, education and awareness activities)
- Explore business development options post the current Australian Government funding cycle (continue to expand the FRCC brand)
- Champion broader natural resource management issues in the local community

FRCC has continued to collaborate with other organizations and groups, including providing office space for the Greening Australia (GA) team as well as Conservation Volunteers Australia accessed our facilities, including the FRCC trailer to support local revegetation projects. This collaboration also extended to partnering to work on projects such as the Schools NRM Expo where 160 year six students and staff from North Rockhampton schools were supported by 15 NRM

organisations. Ergon Park above the barrage was also developed as a flood recovery project as a revegetation site with GA and school involvement.

Activities to engage with schools to provide information and resource support on FRCC activities and services also continued. This was supported by projects such as the Green Footprint Garden, and assistance with the Kids Teaching Kids event at the Hall State School which required students from local schools to conduct natural resource management activities for their peers.

The Caring for Coast project, funded through FBA, allowed FRCC to partner with Rockhampton Regional Council staff and deliver support to five groups on the Capricorn Coast to support revegetation and community engagement activities.

Further grant and funding opportunities continue to be developed and applications submitted to allow this type of support to continue. The State Government Flood Recovery project through FBA allowed FRCC to provide incentive funding to Landholders for the management of parkinsonia and prickly acacia and this year saw the establishment of the guidelines and pilot projects to support the roll out of the funding in 2012/13.

In addition FRCC staff and Management Committee members have supported a range of workshop and community events including: Grazing BMP, pasture management, World Environment Day, World Wetlands Day at Emu Park, Stocktake workshops and our Small Landholder Day. FRCC worked closely with FBA staff, local and state government agencies, businesses and community groups to coordinate support for many of these events.

FRCC is well positioned to continue to develop and deliver services through its strong networks in the local community. Thank you to everyone for your participation and support of activities throughout the year and we look forward to working with our members and partners to create opportunities to continue to build our services.