



Fitzroy River and
Coastal Catchments Inc.

FRCC NEWS

August 2014



Facebook



Website

Have your contact details changed?

Please contact Janeen if you
wish to update your details.

Email: admin@frcc.org.au

Ph: (07) 4921 0573

Meet the FRCC Team

Project Staff



Michelle Hanrahan

President

In this issue:

- President's Message
- Executive Officer's Message
- Meet the FRCC Team
- Track FRCC with new Map App
- Plant of the Month
- Upcoming FRCC events

FRCC Top News Stories:

- The Reef Programme
- Community Growths its Future
- Help Stop the Spread of Tilapia
- Marine Debris Blitz
- Future Leaders Eco Challenge
- Cat's Claw Creeper Project



Fitzroy River and
Coastal Catchments Inc.



President's Message

Welcome to our new look newsletter. This edition is the first in an electronic format and recognises that over 95% of our members have access to either the internet or emails. Our newsletters will continue to be posted to our website as well for future reference and those members who do not have online access will still receive a printed copy of the newsletter.

Our partnership arrangements with Fitzroy Basin Association have developed further as we continue planning and delivery of Australian and State

**Jeff Krause***Executive Officer*

Jeff is the Executive Officer

of FRCC and is responsible for the day-to-day operations of the organisation. Jeff is based out of the Rockhampton office and can be contacted for:

- advice on FRCC services and programs
- facilitating community, industry and government partnerships
- development of plans to guide resource management activities

email: jkrause@frcc.org.au**Janeen Whiting***Executive Assistant*

Janeen is the FRCC

Executive Assistant working out of the Rockhampton office. Janeen oversees the administrative side of the organisation and is the key contact for:

- becoming a member of FRCC
- financial operations and account enquiries
- event RSVPs
- quarterly newsletters

email: admin@frcc.org.au

Government funded programs such as:

- Flood Recovery allowing more than 40 landholders in the Lower Fitzroy and Boyne catchments access to financial assistance to rehabilitate land and restore and deliver more resilient infrastructure on their properties following the impacts of Ex-Tropical Cyclone Oswald in January 2013.
- The Australian Government's Reef Programme remains our major water quality improvement program with our staff providing project development and extension services to the agricultural sector to reduce erosion, runoff and sediment flowing to the Reef.
- Regional Investments, including the Urban and Coastal Engagement programs that focus on encouraging and supporting the local community and community groups to deliver environmental projects.
- The State Government's Fitzroy Pest and Weed management program with priority areas in the Three Rivers and Boyne Calliope areas to work with landholders to manage a range of pest species.

FRCC continues to market our services which include those provided through the FBA network to the wider community as well as continuing to engage and support our 44 member groups and over 600 individual members through low cost access to awareness and training events. Details about some of these are highlighted in this edition and will be further publicised in our regular email updates.

I encourage members to support the activities of our organisation to ensure we remain viable and progressive in our endeavours to deliver enhanced natural resource management outcomes for our communities.

We will shortly be in touch regarding further changes in our organisation to better cater for the expanded service area across Three Rivers and Boyne Calliope. I thank the three management committees for their guidance and advice as we continue to bring about changes while maintaining our focus on client service and delivery of



Anne Alison

Senior Project Officer
Anne is based in the

Rockhampton office and oversees a wide range of project areas. Anne can be contacted for:

- information on project funding availability
- the Grazing and Grains BMP programs
- advice and assistance in undertaking projects as part of Reef Programme funding

email: aalison@frcc.org.au



Shelly McArdle

Project Officer Coastal and Community Engagement
Shelly's role at FRCC is the

Project Officer Coastal and Community Engagement. Shelly works out of the Rockhampton office and can be contacted for:

- workshop information
- community involvement initiatives
- support for projects along coastal areas
- events and media enquiries

email: smcardle@frcc.org.au

our program obligations.

I look forward to taking the opportunity to discuss issues at future member forums as we convene these over the next few months in centres across the three areas.

Michelle Hanrahan

From the Executive Officer

FRCC continues to initiate and support projects aimed at delivering improved awareness and outcomes about natural resource management for our members, groups and the community.

Our skilled and capable staff work closely with colleagues in the FBA regional network to provide services across our three areas, FRCC, Boyne Calliope and Three Rivers:

- Anne Alison – Senior Project Officer coordinating grazing and grains projects and workshops (FRCC office)
- John Rodgers – Project Officer, part time (FRCC office)
- Shelly McArdle – Project Officer, Coastal and Community Engagement (FRCC office)
- Vicki Dart – Project Officer, (Boyne Calliope office, Calliope)
- Marina Wall – Project Officer, (Three Rivers office, Middlesbrough)
- Jodi Anderson – Support Officer (casual) Three Rivers office, Middlesbrough)
- Janeen Whiting – Executive Assistant, (FRCC office)

In addition, we are fortunate to have a valued group of volunteers who assist on a regular basis:

- Jim Price, Calliope – provides landcare advice and support for Cats Claw Creeper projects
- Katrina Schwager, Calliope - CQU science student assists with activities and events
- Radka Jack, Rockhampton - CQU science student assists with activities and events



Marina Wall

Project Officer

Marina works from the

Middlemount office and can be contacted for:

- information on funding availability
- advice regarding undertaking and implementing projects in the Three Rivers area
- information on Grazing and Grains BMP programs

email: mwall@frcc.org.au

- Morgan Sommerville, Rockhampton – CQU marketing student on work placement assists with media and marketing
- Daniel Krause, Rockhampton – Bond Uni urban planning student and marketing graduate assists with marketing and events

We also have other members who volunteer their time and expertise to assist on occasions which contributes significantly to our ability to enhance the range and quality of services we deliver. A special thank you to the many members and others from the community who attend our events and activities.

If you have suggestions on how we may be able to enhance our services I encourage you to contact me or any of our staff to discuss your ideas.

Jeff Krause



Vicki Dart

Project Officer

Vicki works from the

Calliope office and can be contacted for:

- information on funding availability
- advice regarding undertaking and implementing projects in the Boyne Calliope area
- information on the Grazing BMP program

email: vdart@frcc.org.au

Upcoming Events & Workshops





John Rodgers

Project Officer Sustainable Systems

John works in the

Rockhampton office from Tuesday - Thursday and can be contacted for:

- enquiries about funding availability
- undertaking projects with FRCC
- projects under the Reef Programme funding scheme

email: jrogers@frcc.org.au



Jodi Anderson

Three Rivers Admin Support Officer

Hi there everyone, my name

is Jodi Anderson, I live 50kms east of Middledmount on a cattle / grain property along with my husband's parents and older brother. I am married to Colin and have three beautiful daughters Maddison 23yrs, Meghan 21yrs and Sophie 19yrs. My current employment role within FRCC is Admin Support Officer at Three Rivers, working 1 – 2 days per week. I look forward to meeting each and every one throughout my time here.



Saturday 18 October

💧 Free event 💧 Explore our local water source 💧 Walk the Barrage 💧



FRCC Members Forum

Where: Athelstane Bowls Club

When: Friday 12 September 2014

5.30pm – 9.30pm

RSVP to Janeen by 5 September

Email: admin@frcc.org.au

Phone: (07) 4921 0573



More Upcoming Events

FRCC Members Forum	12 September
Sandy Point Discovery Day	27 September
Fitzroy Basin Association AGM	15 October
FRCC AGM	5 December



FRCC Top News Stories

The Reef Programme

Expressions of interest are still open for landholders interested in undertaking property planning, erosion minimisation, machinery or spray technology updates and grazing pressure reduction projects.

Volunteers



Katrina Schwager
Calliope Project Support Officer

I'm Katrina Schwager and I live at Agnes Water with my family on 40 acres of bushland. I am in my final term of an Environmental Science degree at CQU, with a focus on water management. I have been volunteering at the FRCC since early 2014 and am working with Vicki Dart in the Boyne Calliope office. Volunteering at the FRCC has provided me with great opportunity to learn not only more about the region I reside in but to expand my knowledge in areas that my studies have only touched on (or not included), as well as broaden my theoretical knowledge with real world examples.



Radka Jack
FRCC Admin Support Officer

My name is Radka Jack. I joined FRCC as a volunteer in June 2014. I wanted to be more involved in the local community as I am new to Rockhampton. Furthermore, the projects which FRCC participates in are relevant to my studies at CQUniversity.

The Fitzroy Basin Association (FBA) has been allocated \$12.5 million in funding from the federal government's Reef Programme to invest across the region over the next three years. The Reef Programme's goal is to decrease the amount of run-off entering local waterways, and subsequently the Great Barrier Reef Lagoon, through the implementation of improved land management and water quality outcomes.

Projects considered eligible for funding under the Reef Programme include:

- Constructing new fences to reduce grazing pressure and erosion
- Installing watering points to improve ground cover
- Upgrades to existing irrigation equipment
- Improving spraying techniques and technology
- Implementing zero-till methods

Successful projects will be eligible for funding covering up to 50% of the cost of infrastructure changes and machinery upgrades. Landholders are also able to access the support of FRCC's experienced project officers and tailored training courses to assist with the delivery of their projects.

Priority will be given to projects that maximise beneficial water quality outcomes, with all projects required to, in some way, reduce sediment, pesticide and nutrient run-off reaching local waterways.

If you are interested in undertaking a project and accessing this funding, please contact one of our project officers.

Ph: 4921 0573

Email: admin@frcc.org.au



I am in my final year of the Bachelor of Environmental Science Program majoring in Land Management. I have been enjoying my time with FRCC so far, as I have learnt more about land management especially in the grazing industry. It has been great to work with such an enthusiastic and passionate team.



Morgan Sommerville

Work placement/ Media Coordinator

Hi everyone, I'm Morgan,

and am very excited to be doing my university work placement with FRCC, everyone is really lovely and are giving me great guidance and opportunities! I'm in my fourth and final year of studying a dual degree, Bachelor of Business and Bachelor of Professional Communication, Majoring in Marketing at CQU. I work part time and live in Yeppoon with my family. I'm anticipating the end of my degree in two months, with both excitement and nerves. I'm still unsure which direction I will take, I'm passionate about all things related to communication, marketing, public relations and event management. I have been given the opportunity to work on FRCC's media side of things, and I'm gaining some really great experience. I look forward to working further with the FRCC team and broadening my knowledge in all areas of the organisation.

Community Grows its Future

The region's strong community spirit was showcased at this year's Planet Ark National Tree Day Events at Gracemere, Mulambin Beach and Bouldercombe.

Hosted by Rockhampton Regional Council, Livingstone Shire Council, the Queensland Frog Society and Ian Weigh Toyota, the events attracted over 150 participants who planted a record 2500 trees.

Livingstone Mayor Bill Ludwig was among the volunteers. He commended the region's sensational volunteer organisations, the nurseries who supplied the plants, and the fantastic participation from such a broad sector of the community. He explained that this is what makes our region such a special place to live.

FRCC Project Officer, Shelly McArdle said, "Events like this not only add to the ecological values of our regions areas, but it also enhances the liveability of our community."

"National Tree Day promotes biodiversity, ensures public health and welfare, through encouraging community engagement and opening up areas which have previously been sectioned off from the community," said Paddy Delalande, Vegetation Rehabilitation Officer, Livingstone Shire Council.

The number of people who turned up really shows the incredible community spirit that is alive and well in our region, and it's great to be part of it, said Mr Delalande.

Alby Wooler, Capricorn Coast Landcare President and Junior Landcare Coordinator said it was encouraging to see so many young people getting involved.

"It has been one of the most successful tree days; the amount of trees planted, the number of beautiful people, and the fantastic weather," he said.

"National Tree Day brings together people from all walks of life to better our community."

A wide range of community groups contributed to the day including; Capricorn Coast Landcare, Livingstone Remnant Vegetation Study Group, Bahai Youth Club,



Daniel Krause

Marketing and Development Consultant

I'm Daniel Krause, FRCC's

volunteer Marketing and Development consultant. I'm currently studying a Bachelor of Sustainable Environments and Planning, specialising in Urban Design and Planning at Bond University on the Gold Coast and graduated with a Bachelor of Business (Marketing) (Distinction) from Bond in February 2014. I am based out of the FRCC Rockhampton office where my primary role is developing marketing materials and strategies as well as event planning and business development activities. I also provide technical advice and assistance for FRCC staff. I predominantly work for FRCC during university breaks; however, I also do remote work whilst at university on the Gold Coast. Upon graduation from my planning degree in early 2015 I hope to gain work in local government town planning in regional Queensland.

Livingstone Shire Council Nursery, Fitzroy River and Coastal Catchments, the local Lions Club, Pinefest Queen entrants, Society for growing Australian plants, members of local Council, Ian Weigh Toyota and other local businesses.

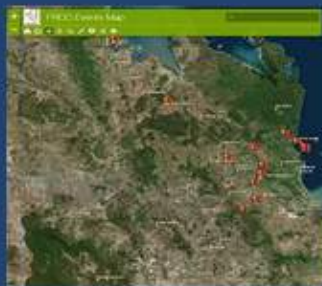


Help Stop the Spread of Tilapia

One of the world's 100 most invasive species and one of the largest threats to Australia's native aquatic biodiversity has entered our local waterways.

In Queensland, Tilapia is a declared noxious fish. This declaration means that if caught, the fish

Track FRCC with new Map App



Find out where the FRCC team has been recently. This new online map app allows you to see what events the team has and will attend.

Click the button below to check it out.

FRCC Tracker

Plant of the Month



**Melaleuca
Leucadendra**

Found along the banks of Moores Creek in North Rockhampton, this beautiful tree earned the common name 'Weeping Paperbark'

In Queensland, Tilapia is a declared noxious fish. This declaration means that if caught, the fish must be immediately disposed of and cannot be kept, used as bait or returned to the water. Infestations of Tilapia are generally caused by people moving fish between waterways. Once Tilapia is established in a waterway it is almost impossible to eradicate it.

A team of experts from Mackay recently visited the Rockhampton District surveying numerous waterways and lagoons for Tilapia.

Reporting catches of Tilapia is encouraged. Fishers should take a photo and report sighting or catches of Tilapia by calling 13 25 23 or visiting www.fisheries.qld.gov.au

Marine Debris Blitz

Over 100 community members put their hands up to assist in a huge Marine Debris Blitz that was held recently across local beaches from Tannum Sands to Sandy Point in Yeppoon.

FRCC Executive Officer Jeff Krause said, "It is vital to remove and prevent marine debris, as this man-made rubbish ends up in our oceans, and poses a threat to our coastal and marine ecosystems. It's a huge job and it is so encouraging to see the growing numbers of people getting involved in this initiative".

Participants had the opportunity to collect and record data on the types and quantity of debris found. This data is then uploaded onto the Tangaroa Blue national data base providing information on the possible sources of that debris and showing change over time.

There were some interesting finds on the day, such as a lounge and deck chairs, portable fridge along with a staggering amount of plastic bottle caps.

The local groups who got involved in the beach blitz included; the Livingstone Plastic Bag Free group, FBA, Rockhampton Discovery Parks, Cedar Avenue Early Learning Centre, LSC, Capricorn Coast Landcare, GBRMPA, Fitzroy Basin Elders Committee's Gundoo

Maleleuca Leucadendra is tolerant of both wet and dry conditions and is adorned in weeping bright green foliage and flowers that appear throughout the year with the main show occurring in the winter months. The fragrance of these flowers can be smelt from a considerable distance.

The tree, native to northern Australia, provides habitat and is a source of food for many bird species and can grow up to 10m in height.

For Indigenous Australians the Weeping Paperbark is very significant in that its flowers were used to flavour water and the leaves were used to make a tea to which was useful in the treatment of coughs and colds.

This tree can easily be propagated from seed.

Rangers, CapCoast Outriggers, Scouts and Gird Guides, Surf Riders Association, Paddle Capricornia, CQU, Emu Park Bushcare and numerous amounts of individuals who all worked together to deliver incredible results.

FRCC looks forward to continuing to work with the community to raise awareness of the need to take care of our natural environment.

Keep an eye out for upcoming events on the website to find out how you can become involved in other community projects.



Future Leaders Eco Challenge

Story contributed by [GBRMPA](#)

Rockhampton and Capricorn Coast students get involved in local actions to protect the Reef.

More than 80 students and teachers from 11 Rockhampton and the Capricorn Coast schools swapped the classroom for the beach to learn about how local environmental actions can protect the Great Barrier Reef.

The day-long activities were part of the Great Barrier Reef Marine Park Authority's (GBRMPA) annual Future Leaders Eco Challenges that raise awareness about how activities on the land can affect the marine environment.

FRCC is always eager to share what we've been up to in the community.

Why not help us by forwarding our newsletter to your friends via email or sharing it on Facebook.



Share



Forward

GBRMPA's Liaison Officer Rhianna Rickard said it was important to support future generations to be environmentally and ecologically aware of the local and global ecosystems.

"Educating school students about the part they can play in helping to protect the environment is invaluable, as they are the future custodians of our environment," Ms Rickhard said.

Students collected marine debris at the southern end of Kemp Beach — this activity was run by not-for-profit organisation Tangaroa Blue, which coordinate beach clean-ups around Australia.

Heidi Taylor from Tangaroa Blue said students collected and recorded data on the marine debris they found.

"Cigarette butts were one of the top ten items found at Kemp Beach," she said.

"This type of litter indicates a local litter problem - most people don't realise cigarette butts are made of plastic and as students found out, they can have a real impact on marine creatures."

The students also learnt about coastal dune vegetation and erosion, and participated in a nature-inspired printing activity mentored by prominent local artists Jett James and Renton Bishopric.

They also trekked up to Turtle Lookout to get a glimpse of the amazing Keppel Bay and learn some facts about turtles.

This year's Rockhampton and Capricorn Coast event was delivered in partnership with Fitzroy Coastal Catchments and Fitzroy Basin Association.

The Future Leaders Eco Challenge event was also supported by Queensland Parks and Wildlife Service and Reef Guardians Livingstone Shire Council.

GBRMPA's Reef Guardian Schools program includes 308 schools and over 126,000 students from Torres Strait to Brisbane taking part in Reef education and environmental stewardship activities in their local area.



Cat's Claw Creeper Project

The cat's claw creeper (*Dolichandra unguis-cati* (syn. *Macfadyena unguis-cati*); Bignoniaceae) is a destructive vine native to Central and South America. The weed is the cause of environmental concerns in coastal and sub coastal areas of southern Queensland and northern New South Wales, and is a major issue in the Boyne Valley region. FRCC Project Officer Vicki Dart has been working with landholders and the community in an effort to prevent, reduce and control the damaging weed in the region.

The weed presents a major problem because the vine grows into the canopy and competes with the trees for sunlight. This reduces trees ability to photosynthesise and causes the trees to weaken. This can cause further issues when floods come through the region, as trees are weakened and more easily pushed out of the ground.

The newly released biological control agent used in this region to remove the cat's claw creeper is the leaf mining jewel beetle (*Hylaeogena jureceki*). This beetle is detrimental to the growth of cat's claw creepers as both adults and larvae feed on the weed's leaves. The insect lays eggs on the underside outer edge of the leaves, where larvae then feed and develop within the leaf. Adult jewel beetles are 3mm in length, can live for longer than five months and continuously chew away at the leaves.

An interesting and positive element of this control method is that the insect is only capable of development on the cat's claw creepers, ensuring that other plant life won't be affected by the release of the beetles.

A demonstration site was established on Flutter Creek last October, which saw 1000 beetles being released. From ongoing monitoring it was found that the beetles have vigorously moved around the area, with some beetles found 200 metres away from the original release site.

From this, two landholders on the Boyne River have agreed to host projects to try and control the cat's claw creepers. Stage one has seen chemical control, and stage two will see the release of beetles in the densest areas of weed habitat, with continuous monitoring planned.

FRCC volunteers, Jim and Kim Price have been working on making three cages which hold roughly 30 plants each, where the insect colony can begin to grow. These cages will be left with the three schools within the Boyne Valley so that the children can be involved and grow the colonies until they are ready for field release. Parents will also have the opportunity to get involved, and help with field days for release and monitoring of the beetles. This is a great way to engage with the youth and foster community involvement.

Vicki recently held a workshop at Milton Station about the cat's claw creepers and what measures are in place and planned to control the weed. A lot of interest built after this, and multiple land holders have expressed interest in releasing the beetles on their properties.

A stall at Gladstone's Ecofest jointly run by FRCC and FBA also drew a lot of attention in regards to environmental awareness, including the cat's claw creeper issue in the region. More than 10,000 people attended the event. Local Artists, Jan Stiller and Francis Schulze weaved baskets out of the cat's claw creeper vines, which proved to be an innovative way to create interest around weed management.

A stall at Gladstone's Ecofest jointly run by FRCC and FBA also drew a lot of attention in regards to environmental awareness, including the cat's claw creeper issue in the region. More than 10,000 people attended the event. Local Artists, Jan Stiller and Francis Schulze weaved baskets out of the cat's claw creeper vines, which proved to be an innovative way to create interest around weed management.

Congratulations to Vicki and Kelly Smith from FBA for coordinating the joint display and winning the award for the best display at Ecofest.

Vicki welcomes and encourages any ideas or suggestions as to how this project could be developed further. She is continuing to increase community involvement, the beetles have been less active over the colder months so she is working on getting as many beetles as possible released in spring.





Future Beef News

The latest Future Beef newsletter contains several articles we thought should be shared with all of our members in the grazing industry.

[Tropical forages: an interactive selection tool](#)

Explore the interactive selection tool available on the Tropical Forages website. This allows you to identify and select forage species best suited to local conditions.

[Take \\$tock, make \\$tock at Kidman Springs 2014](#)

'Take \$tock, make \$tock', the theme for this year's Kidman Springs field day. Follow the link to find out more about the field day program.

[Bush bible for western Queensland](#)

A guide to the drought assistance schemes and support programs available for farming families in drought affected rural Queensland.



Fitzroy River and Coastal Catchments Inc.

14 Wandal Rd

ROCKHAMPTON Qld 4700

Ph: (07) 4921 0573 | Fax: (07) 4921 2853 | E: admin@frcc.org.au | www.frcc.org.au