



Capricornia Catchments Inc.

NEWSLETTER May 2017

PRESIDENT'S MESSAGE

Michelle Hanrahan

Change is continual in our world which requires us to be flexible and able to adjust to meet changing needs and priorities of our clients, the community and our funders. We continually look for opportunities to meet member needs and look for funding sources to deliver positive outcomes.

This year Rockhampton Regional Council is providing assistance with the planning and delivery of another small landholder day. This will be our fourth over the past five years, with previous events being highly valued by our members and wider community. Unfortunately the flooding in April forced the event to be postponed to 16 September, but we see this as an opportunity to deliver an even better event where we bring a wide range of specialist industry information to smaller landholders.

I also acknowledge the continued recognition of the leaders of the GenYadaba group, Mikala Maloney and Morgan Ells, for being awarded the Australia Day Environmental Award by Livingstone Shire Council. Their enthusiasm and passion for engaging youth in environmental activities is valued by colleagues in GenYadaba and Cap Catchments. We value very highly the continued support for many of our projects provided by Livingstone Shire



Council.

As has been the case for that past 12 years, we value our ongoing partnership with the Fitzroy Basin Association

as well as our many partner organisations that continue to work closely with us, including a new group, GreenCollar partnering with us to provide advice to landholders about possible financial returns through the Clean Energy Fund. We also look forward to working closely with Greening Australia, who base their field operations with us in Rockhampton, as opportunities arise in conjunction with Reef Trust 4.

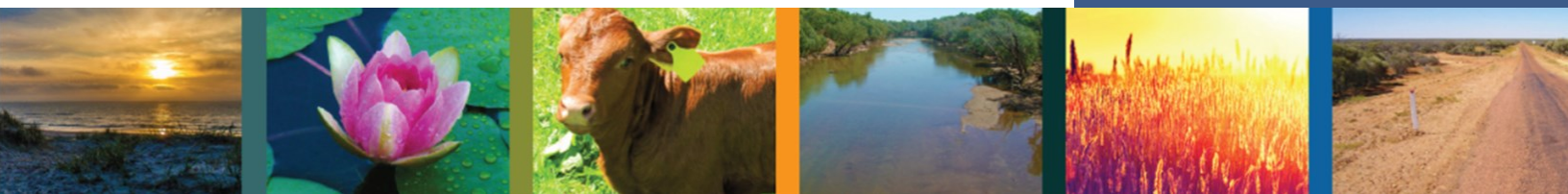
Queensland Water and LandCarers (QWaLC) continue to deliver valued services through the provision of insurance for our volunteers, links with a strong landcare network throughout the state and on occasion funding for specific projects.

Cap Catchments continues to support major events across our service area, including Ecofest in Gladstone, St Lawrence Wetland Day, rural shows such as The Caves, Ridglands and Mount Larcom.

Continued Over

IN THIS ISSUE

- President's Message
- Executive Officer's Report
- Reef Trust 2 Gully Erosion Remediation Program
- Grazing BMP
- GenYadaba Pair Put the Soul into Sustainability
- Team Work Gets Calliope's Biocontrol Nursery Operational
- CHRRUP 2017 Future Food & Fibre Conference, Capella
- Small Landholder Day 2017
- Inquiry into the Impact of Weeds
- Assisting Grain Growers to Reap Dividends
- New Staff
- Upcoming Events



PRESIDENT'S MESSAGE CONT.

We appreciate the interest from landholders in the recent programs that are targeted at addressing specific sediment reduction issues in priority areas.

Again we have experienced severe wet weather and flooding in parts of our area and we continue to look for ways to support landholders to recover with infrastructure that is more resilient and training that raises awareness and provides strategies to allow people to better handle these severe events.

I also pay tribute to my fellow Management Committee members for their dedication and expert input into establishing the strategic direction and priorities for our organisation and as always, please contact any of our committee members or our staff if there are ideas or matters you wish to discuss.



CC at The Caves Show

EXECUTIVE OFFICER'S REPORT



Jeff Krause

It is a pleasure to be back at work with Capricornia Catchments following my leave earlier in the year. Thank you to Michelle, Mark and the rest of the staff for your efforts while I was away.

This year continues to create challenges as well as opportunities for us with recent changes in funding reducing time for staff to deliver projects which has seen John Rodgers leave us. John resigned after over 8 years with FRCC and Capricornia Catchments and we wish John all the best for his future.

While we have experienced reductions in staff time we are hopeful that the recent announcement of a new Reef Trust 4 program in the lower Fitzroy area will deliver further resources in future years.

Earlier this year we employed two new staff to deliver Reef Trust 3 programs, and we welcome Meghan Anderson to the Middlemount office and Scott Day based in the Rockhampton office. Both have strong links to the agriculture industry and are enjoying their work with landholders to deliver projects that improve water quality and more sustainable land management practices.

I thank all our staff for their continued commitment and enthusiasm to delivering quality outcomes for our clients and our funders.

Lisa Del Riccio in Calliope is nearing the end of this year's projects at Boat Creek and for species protection in the Boyne Valley/Kroombit Tops area. Lisa continues to support the Boyne Valley Working Group as well as setting up the Jewel Beetle breeding facility to assist in the control of cats claw creeper in conjunction with volunteers, Gladstone Regional Council and Gladstone Area Water Board at the GRC Calliope depot.

Shelly McArdle has a range of projects nearing completion for this financial year on the Capricorn Coast and the Fitzroy flood plain and is working with community groups to develop applications for FBA's Community Grants program for next

financial year.

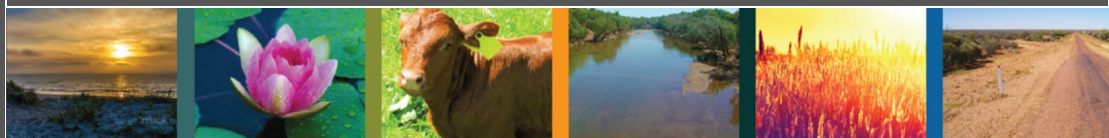
Marina Wall and Meghan Anderson from Three Rivers and Mark Schulz and Scott Day from Rocky have a range of projects under way with landholders for Reef Trust 2 and 3 as well as continuing to arrange training and workshops and conducting surveys of past projects. Mark also continues to develop wetland protection projects in the Alligator Creek and lower Fitzroy catchments.

As Project Coordinator, Mark Schulz is applying his expertise in program management to streamline our project planning and delivery systems with the aim of delivering more integrated and efficient services to our clients and funders.

Janeen Whiting manages our administrative functions as well as our website and facebook to support staff with service delivery, and provide links to our clients. We are experiencing some IT issues related to the roll-out of the NBN, as are other businesses in the Wandal area, so please bear with us as we continue to work through this with our service provider.

The recent flooding following Cyclone Debbie impacted on many landholders, particularly in the Isaac, Connors and lower Mackenzie catchments with many losing stock, crops and infrastructure and our staff continue to keep in touch to assist where possible.

We look forward to your continued interest in our services and are always happy to hear about any issues or matters you wish to discuss with any of the staff at Cap Catchments.



SEASONAL OUTLOOK BRIEFING AND DISASTER PREPAREDNESS SEMINAR

Mark Schulz

Late last year Capricornia Catchments attended the annual Seasonal Outlook Briefing and Disaster Preparedness Seminar hosted by QLD Fire and Emergency Services and the Bureau of Meteorology.

A number of representatives from the various emergency services organisations, government agencies and local councils also attended this seminar and provided updates on their disaster planning and response capabilities.

Representatives from NBN provided a snapshot of their new network rollout and also reminded users that unlike the old Telstra system, some of the new technology will not work if you lose power, meaning that your phones and internet may not be available....

So **be prepared** and have back up communications like mobile phones and ipads on hand or look at keeping power up to your homes somehow.

The Bureau's hydrologists also presented their report on forecasting improvements and new technology and services available for the upcoming fire season onwards.

Their seasonal outlook can be found here... <http://www.bom.gov.au/climate/ahead>

The Bureau of Meteorology has also recently released a new handy Weather App for those that have mobile devices, which is easier to use than the previous ones

available on line. <http://www.bom.gov.au/app>

The Department of Science, Information Technology and Innovation (DSITI) provided an interesting snapshot of what they do with regards to coastal wave height and tide level monitoring and forecasting. The department manages and maintains a number of wave rider buoys and tidal monitoring stations along the coastal waterways and provides real time information to interested parties and via the internet.

To access this information you can click on

<https://www.qld.gov.au/environment/coasts-waterways/beach/storm>

In summary, The key messages that were delivered to all that attended were focused on being prepared for whatever Mother Nature delivers and to Get Ready

<https://getready.qld.gov.au>

The Bureau of Meteorology has predicted that we will most likely slip into a La Nina weather pattern. This means that we may see the potential for several significant rainfall events and thunderstorms during the coming months.

It is also highly likely that we will see further significant rainfall and flooding occur in our region during 2017.

With the cooler temperatures and drier weather also comes the increased risk of bushfires.

Central Queenslanders are reminded to be mindful of the weather conditions and not light fires without permits or first consulting with their local fire wardens or Rural Fire Service Brigades.

We have already seen a number of days that have had temperatures well over 35 degrees Celcius with very low humidity levels, which is very conducive to extreme fire behaviour.

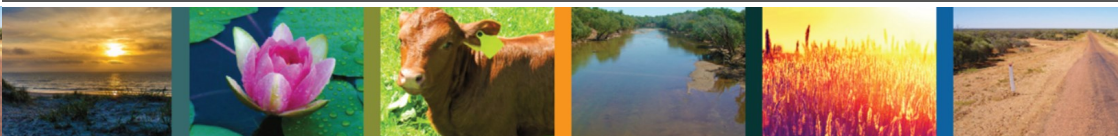
To find out more about fire permits, bushfire safety and how to prepare yourself for emergencies go to

https://www.ruralfire.qld.gov.au/Using_Fire_Outdoors/Pages/Fire-Bans-and-Restrictions

The QLD Fire and Emergency Services indicated that they are ready for whatever happens and encourage everyone to be prepared, but not take risks.

When driving about after storms and floods remember to look for fallen powerlines, trees and flooded roads and creek crossings.

Also remember that **If Its Flooded Forget It and have a Plan B .**



GENYADABA PAIR PUT THE SOUL INTO SUSTAINABILITY

Shelly McArdle

GenYadaba has contributed to numerous projects over the last few years including on-ground conservation work at:

- Mulambin Beach- Livingstone Shire Council- Vegetation Rehabilitation Officer Paddy DeLalande - Weeds and revegetation
- North Keppel Island- The North Keppel Island Environmental Education Centre- Erosion management and revegetation
- Five Rocks- The Capricorn and Sunshine Coast Branches of The Surfrider Foundation at Five Rocks- 1.1 tonnes Marine debris collection
- Capricorn Coast Landcare's Fig Tree Creek Awareness Day – Native Plant activity
- Monthly social documentary viewings – aimed at educating on vast diversity of social, environmental and cultural issues as well as providing a space to connect with other like-minded people.
- Island Eco-Challenges

Events that put a spin to traditional “environmental work”. Aiming to create a connected, empowered and active community of young people.

They have represented the Capricorn Coast speaking about Youth engagement at the State Landcare Conference 2015 and more recently at the ‘Putting the Soul into Sustainability’ forum held in South-East Queensland in late 2016.

Mikala also was a finalist in last year's Premiers awards which was a great experience for all involved.

All this attention is not going to their heads with the group more determined than ever to keep the momentum going when it comes to providing opportunities for local youth to contribute to the future of our natural environment.

GenYadaba's Morgan Ells said “We aim to have a monthly working bee throughout 2017 that will include beach restoration (Planting and weeding) and marine debris clean ups/data collection so there will be plenty of opportunity to become involved

and contribute to the conservation of some of our natural spaces. It's pretty casual, and you don't need to have experience, just come along.”

“We have some really exciting plans that arose out of a recent brainstorming meeting and we are looking forward to growing our group with the aim of enhancing cross cultural awareness, social connection and environmental action” said Mikala.

To find out more check them out on facebook.



SMALL LANDHOLDERS DAY 2017

Back by popular demand, Capricornia Catchments Small Landholders Day is on again but due to the recent flooding has been rescheduled to **Saturday 16th September 2017**.

This event is to be held at the Robert Schwarten Pavillion in the Rockhampton Showgrounds with the facility and marketing services provided by Rockhampton Regional Council.

The Small Landholders Day provides landholders across the Rockhampton region with the opportunity to engage with industry experts and like-minded people and learn about resources, support and incentives available to help them better manage their land.

The 2017 event will be the fifth Small Landholders Day hosted by Capricornia Catchments.

Local businesses, Government agencies and community groups are invited to conduct presentations on their area(s) of expertise and/ or operate a static stall

displaying what the business or organisation does and how people can become involved.

This year's Small Landholders Day will include presentations on topics such as:

- Conservation-Land, environment and sustainability
- Grazing and Livestock management
- Biosecurity, pest animal and plant control
- Firearms & farm safety
- Horticulture & biodynamics
- Livestock & animal husbandry

Whilst the event is targeted at landholders operating on blocks sized between 5 and 500 hectares, members of the general community are welcome and encouraged to attend the event.





TEAM WORK GETS CALLIOPE'S BIOCONTROL NURSERY OPERATIONAL

Lisa Del Riccio

Calliope's cat's claw creeper biocontrol nursery is now operational thanks to a joint effort by Capricornia Catchments (CC), Gladstone Regional Council (GRC) and Gladstone Area Water Board (GAWB). This partnership has resulted in a breeding facility for the Jewel Beetle (*Hylaeogena jureceki*), a natural predator which feeds on and mines the cats claw vines leaves. This facility enables bred beetles to be harvested and released into local cat's claw creeper infestations.

CC has facilitated the propagation of

hundreds of cat's claw plants which are needed to feed and host the Jewel Beetle. CC community volunteers and the Gidarjil Rangers and Skilling Qld teams have donated time and energy into maintaining the nursey stock, and transporting plants from the shade house to the breeding nursery.

GRC has provided the site and funded the nursey installation, while GAWB has funded locally fabricated customised nursery benches.

The combined effort of agencies and volunteers has enabled the development of this facility which will be a tool in the management of the

invasive cat's claw creeper.

If anyone is interested in volunteering in the nursery, or would like information on managing cats claw creeper, contact the Calliope office on 4975 6315.



Brent Tangey, GRC Pest Management Supervisor (North), with Gidarjil Skilling Qld team members.

REEF TRUST 2 GULLY EROSION REMEDIATION PROGRAM

Reef Trust 2, the 'Gully erosion remediation program', one of the federally funded programs being rolled out by the FBA network this year is well underway. The first project developed in the Fitzroy region of Capricornia Catchments has been completed. This follows a rigorous process including assessment and approval by CSIRO soil scientists after planning carried out by the landholder, FBA Land Management Officer, Capricornia Catchments Project Officer. The landholder, Dan Bishop from 'Fig Tree' near Glenroy crossing, has completed his on ground works and

was delighted with the erosion control measures in the gully trapping silt and debris to fill the gully instead of flowing down to the river. In this project, a small area has been fenced to restrict cattle access for 3 years to allow regeneration to start and PCD's or 'leaky weirs' have been constructed at strategic positions to collect sediment in the gully floor.

There is still funding available for this type of project so if you have an area of erosion you would like to rehabilitate please contact us in Rockhampton or Marina Wall at our

Middlemount Office.

There are priority areas identified for assistance through this project however we are happy to discuss project ideas with landholders.

GRAZING BMP

We want your feedback to help improve the Grazing BMP. We are interested in the views of all graziers, whether or not you have heard of Grazing BMP, attended events or completed modules. We are seeking your views via a short online survey. You can complete the survey anonymously by clicking on this link:
<https://www.surveymonkey.com/r/GrazingBMP>

The FBA has contracted First Person Consulting to conduct an external review of the Grazing BMP project. For any questions or comments, you can contact Dan Healy at First Person Consulting on (03) 9600 1778 or via email:
dan@fpconsulting.com.au



CHRRUP 2017 FUTURE FOOD AND FIBRE CONFERENCE CAPELLA

Scott Day

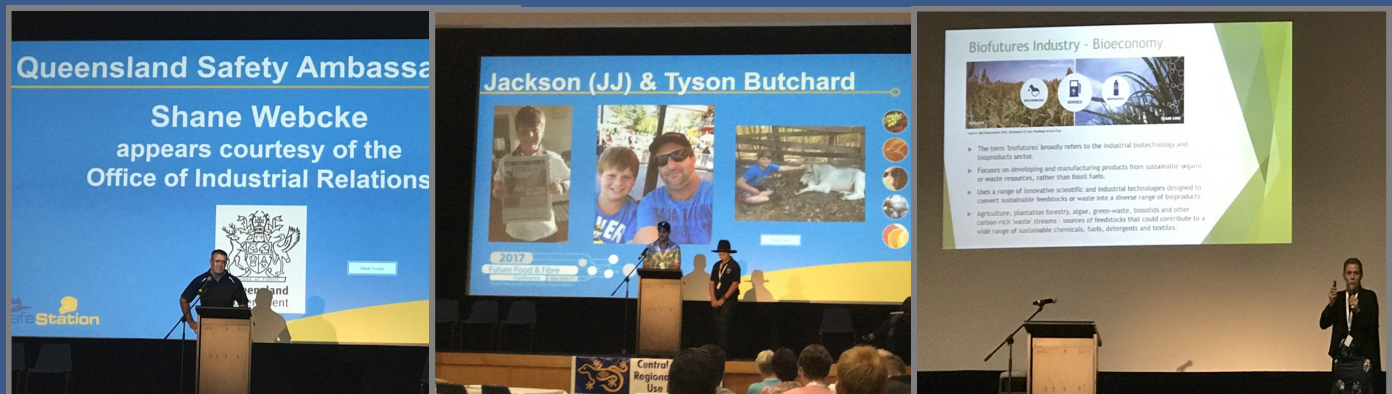
This Conference was held at Capella in March with a diverse range of speakers giving presentations over the 2 days, speaking about various topics relating to Agriculture.

Many of the speakers talked about personal onground experiences to

building a sustainable agricultural businesses, whether it be; diversification in their business, adaptability to change, improving methodologies being applied onground or 'all of the above'.

Speakers were football legend Shane Webcke, Qld Safety Ambassador, Bruce Pascoe author of Dark Emu,

Tyson & Jackson (JJ) Butchard from central Coast of New South Wales owns Cattle and Boer goat breeding enterprises and Larissa Rose Qld Renewable Fuels Assoc.



ASSISTING GRAIN GROWERS TO REAP DIVIDENDS

Marina Wall

Brian and Judy Pownall's home, 12,000 hectare Leichhardt Station, lies 25km east of Dysart in the brigalow belt of Central Queensland and has been in the family since the 1930s. The Pownall's run a breeder and trade cattle operation. Leichhardt comprises 10,000ha of grazing – flooded brigalow, brigalow, coolibah downs and box country, including 800ha of leucaena - and 2000ha of cultivation. Brian and Judy have a long history with Capricornia Catchments – as Judy said "We plan to keep improving our country and look after it as well as we can, so the kids can come back to a profitable enterprise if they wish".

Brian recently identified through the Grains BMP program the necessity to design and construct farm over contour banks in one of his cultivation paddocks. These contour banks will significantly reduce the risk of erosion in the paddock by intercepting surface water flows before they get large

enough to cause erosion and will direct the excess water to existing waterways. A further benefit of contour banking is that land is worked leaving furrows on the contour, leading to better water distribution and infiltration and a reduction in the sediment load that is carried downstream.

The FBA network and Capricornia Catchments has programs available that provide different levels of support to help farmers improve their properties. We are keen to provide assistance with opportunities for training, technical advice and grants to undertake projects that improve water quality, crop yields and farm viability.

Please don't hesitate to get in touch if you are interested or would like further information.



Queensland Parliament – Agriculture and Environment Committee Inquiry into the impacts of invasive plants (weeds) and their control in Queensland, including Giant Rats Tail Grass Case Study and Field Trip

Scott Day

A State Government Agriculture and Environment Committee Inquiry was recently held at Gladstone, April 27, 2017. The topic of this Inquiry was Giant Rats Tail (GRT) Grass. Case Study and included; inspections of weed-infested properties and treatment and control methods, informal roundtable meetings and a public hearing.

The day started with members of the Committee and other participants conducting a field trip to the Mount Larcom district where they visited a recently constructed wash-down facility at Aldoga.

The field trip then progressed to a number of properties in the area that had varying distribution and

densities of GRT infestations. During these site visits open discussions included, control methods and regimes that had been implemented, associated costs and effectiveness of treatment in each situation.

At the conclusion of the field-trip, the committee convened an Informal roundtable meeting with stakeholders and the general public and a public hearing where witnesses were invited to give a summary of submissions presented to the committee.

Various discussions with the committee included responsible and effective control to reduce the associated impacts and spread of GRT on all land, regardless of tenure and/or land type (i.e.

freehold or State-controlled, town housing, small acreage, larger rural holdings, Industrial, National Parks or State Forest), education and awareness, biological controls and other research, available funding, control techniques etc.

A full transcript of proceedings and written submissions can be viewed or downloaded from the Queensland Parliament Website:

<https://www.parliament.qld.gov.au/work-of-committees/committees/AEC/inquiries/current-inquiries/14-Weeds>

Similar enquiries are being conducted with prickly acacia.



Aldoga Washdown Facility



GRT Infestation



Committee discussing with participants the costs and effectiveness of GRT Grass treatments

CYCLONE MARCIA PHOTOS FROM OUR REGION



Clarke Creek State School swimming pool



Duckponds, Rockhampton



Football field, Calliope



EVENTS

Watch for workshop and field day opportunities in your area over coming weeks and months.

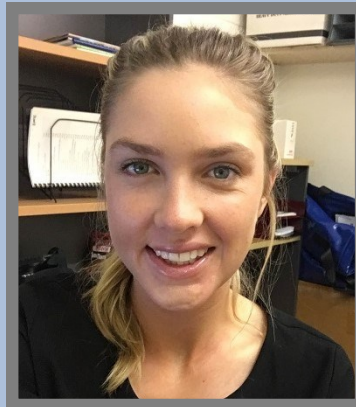
MAY

21 Butterfly Day, Lammermoor Native Gardens

JUNE

- 2** Boat Creek Working Bee
- 3** Ridgeland Show
- 4** Ecofest, Gladstone
- 7** Multi-Topic Forum, Rockhampton
- 15** Rockhampton Show
- 10** St Lawrence Wetlands Day
- 24** Mt. Larcom Show
- 24** Saltwater Festival, Waru Yeppoon

INTRODUCING OUR NEW TEAM MEMBERS



Meg Anderson

I am pleased to be a part of the field services team within the Three Rivers Sub-Region. As a project officer I will be responsible for running a variety of on ground works throughout the Isaac, Connor and Mackenzie areas. My background is in agriculture, with my family owning a farming and grazing property called 'Euroka', situated just 50km East of Middlemount. It was here where I was raised, before going away to boarding school and then onto college to study Wildlife Science, at the University of Queensland.

Agriculture and the environment have always been in my blood, and I am excited to be joining Capricornia Catchments in promoting sustainable agriculture by liaising with landholders to achieve best management farming practices throughout Central Queensland. I look forward to meeting you all very soon.

Meg is based at the Middlemount office.



Scott Day

I was born and raised in Central Queensland. Coming from a rural background I started working on properties throughout CQ from a fairly young age. I have approximately 35 years personal experience in active Invasive plant, Feral animal and Stock Management. As an integral part of this experience I have previously been associated for some 22 years collectively, working in natural resource

management and coordination roles with Local Government Agencies for Stock Routes, Pest plants & Feral animal management. Some of my other interests outside of work include photography, fishing, golf and travel. Having recently started with Capricornia Catchments, I am looking forward to working with the Team and local landowners across the Fitzroy region.

Scott is based at our Rockhampton office.

Capricornia Catchments Inc.

14 Wandal Road, Rockhampton Q 4700
T: 4921 0573 F: 4921 0528
E: info@capcatchments.org.au
www.capcatchments.org.au



Australian Government



Queensland Government

